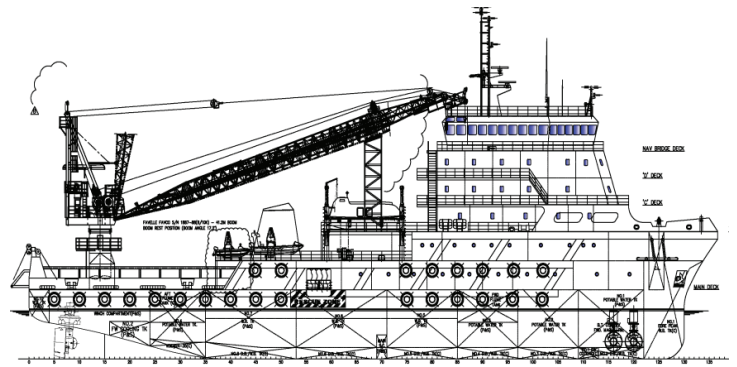


# Accommodation Workboat

## Sapura Duyong



Name : Sapura Duyong  
Year Built : Built in 2013, Malaysia  
Ship Manager : Sarku Marine Sdn. Bhd.  
Classification : American Bureau of Shipping A1, AMS, Circle E, FFV1, SPS2008, DPS-2  
Living : Fully air-conditioned for  
Accommodation : 200 men  
Crane : Favelle Favco Crane, Model 8/10K API 2C, Lattice Boom Type Offshore Pedestal, Capacity SWL 45 MT with 140ft boom length

### Dimensions

Overall Length : 82.00m  
Length WL : 77.80m at 5.5m draft  
Depth Moulded : 7.20m  
Beam MLD : 22.00m  
Loaded Draft : 5.50m  
Gross Tonnage : 1552 MT

### Deck Space

Deck Space : 630 m<sup>2</sup> (approx.)  
Deck loading : 10MT/m<sup>2</sup>

### Tank Capacity

Potable Water : Approx. 1250m<sup>3</sup>  
Fuel Oil : Approx. 850m

Mooring System : 4 point mooring, Mentrade  
Anchor wire : 4 x 44mm x 1200mm  
Anchor details : 4+1 x 5000kgs Flipper Delta Drum/Winches – 50T 4x single drum hydraulic winches.  
: Full remote at wheel house and local control with tension & footage counter and CCTV

### Machinery

: Two (2) Main Engine CAT3516C 4 strokes, MCR 2400 kW ea.  
: Two(2) Main generators, CAT C-18, air started and cooled, ea. 550kw, 440V, 3 phases, 60Hz at 0.8 p.f.  
: Two (2) shaft generators, ea. 750kW, 60 Hz.  
: One (1) Emergency generator, CAT C-18, 250kW, 440V, 3 phases, 60 Hz  
: Two (2) Azimuth Thruster, Berg Propulsion with controllable pitch propeller  
: Two (2) transverse bow thrusters, Berg Propulsion 900kw, controllable pitch propeller

### Safety Equipment

: Fire Fighting Equipment and life saving equipment as per SOLAS requirements and SPS Code  
: Firewater sprinkler/ CO2 system cover the engine room area  
: Fire Detection connected to central alarm system

### Navigation/Communication Equipment

: Two (2) Radars  
: One (1) Satellite Navigators  
: One (1) echo sounder  
: One (1) speed log  
: Three (3) Gyro compass  
: One (1) auto pilot  
: One (1) Magnetic Compass  
: Others as per IMO, class and flag state requirements

### DP II system

: Two (2) complete latest dynamic positioning system Kongsberg as per IMCA and IMO Class 2

### Other equipment

: 6 men FRC boat  
: Oily water separator 1m<sup>3</sup>/hr  
: Sewage treatment plant  
: Two (2) unit water Heater  
: Two(2) 50T water maker plant  
: Gangway  
: Two (2) 10T captans  
: Two (2) 4.05T ship anchors with 522.5m chain

\*\* This vessel specification is given in good faith & assumed correct. Details given are without guarantee.

\*\* Owner reserve the right to amend the specifications without notification

